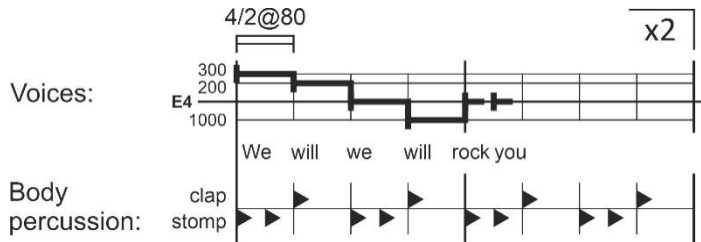


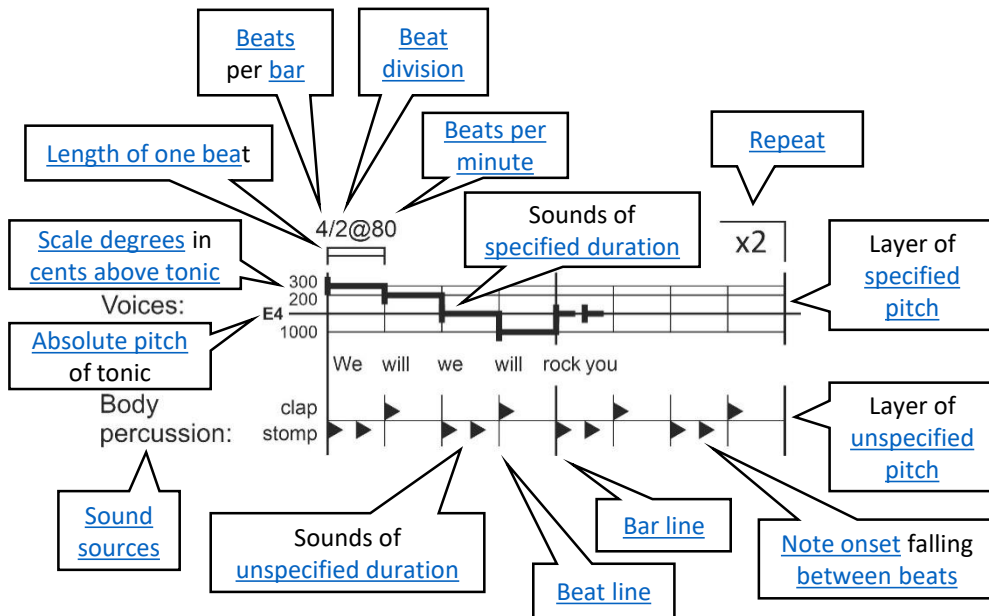
Quick Guide to Global Notation

Basic features...

illustrated with Queen, "We Will Rock You," 1977; chorus

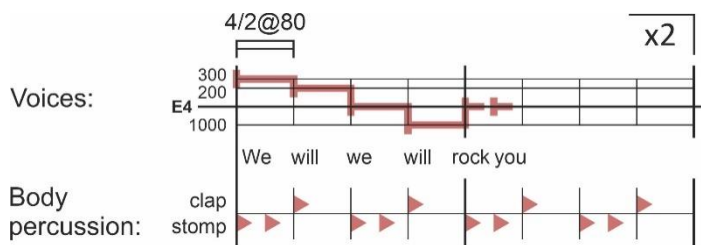


...with annotations and links to the full explanations:



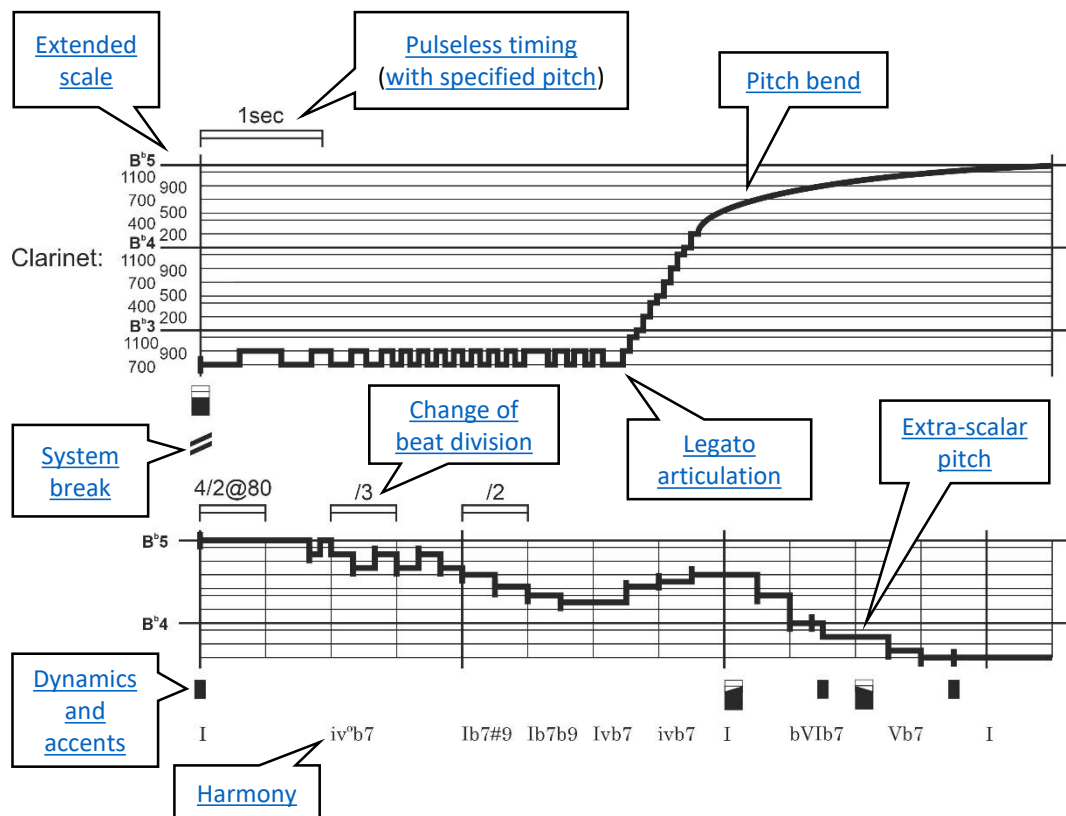
Color option

Symbols representing sounds may be [in color](#); grid lines show through.



Some refinements...

illustrated with George Gershwin, *Rhapsody in Blue*, 1924; opening



Computer-aided notation

illustrated with "Amazing Grace" performed by Fellowship Independent Baptist Church, from recording by Jeff Todd Titon; notated using [sound analysis software](#)

